

## OFFICE SPACE

**2150 ROBERTSON ROAD, Unit 15**

Ottawa, Ontario

**SUMMARY**

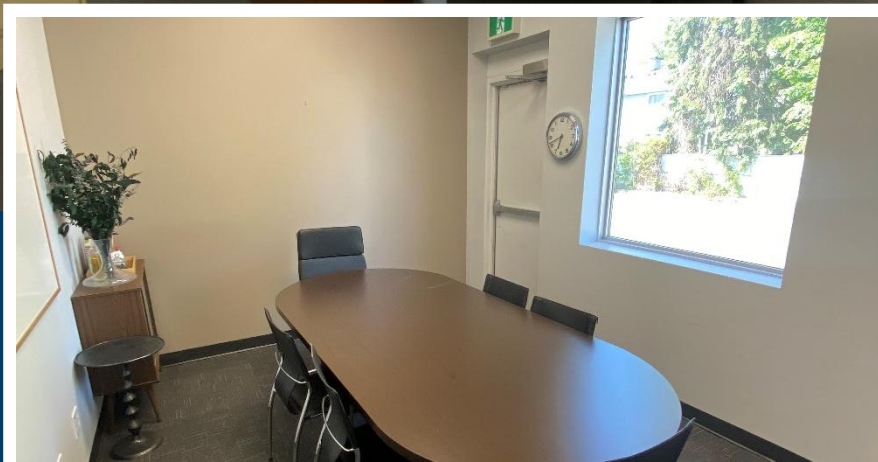
Unit 15 consists of 936 SF of retail/office space split between 3 rooms, which could be used as 2 offices and 1 boardroom 3 offices. It is located within the Robertson Centre Shopping Plaza.

This unit would be suitable for a small business looking for a professional retail or office space in a busy plaza in the heart of Bells Corners. There is plenty of free surface parking with numerous retail stores surrounding the unit, including Dollarama, TD Canada Trust, Fresh Co, Rexall, and several restaurants.

**PROPERTY DETAILS**

SIZE	936 SF
RENTAL RATE (NET)	\$26.00/SF
REALTY TAXES	\$8.28/SF (Estimated 2025)
OPERATING COSTS	\$12.75/SF (Estimated 2025)
PARKING	Ample, on site
AVAILABILITY	Immediate





**PHILIP ZUNDER** President | Broker of Record  
613.725.7170 | pzunder@cdnglobal.com

**BEN ZUNDER** Vice President | Sales Representative  
613.913.8858 | bzunder@cdnglobal.com

**ERIKA JOHNSON** Sales Representative  
514.237.1612 | ejohnson@cdnglobal.com

**CDN GLOBAL (OTTAWA) LTD.**  
1419 Carling Avenue, Suite 203 | Ottawa, ON | K1Z 7L6  
[www.cdnglobal.com](http://www.cdnglobal.com)

The particulars are submitted to the best of our knowledge and are subject to change without notice. CDNGLOBAL does not assume responsibility for any errors or omissions.

