

Stand-Alone Building
// Alyth/Bonnybrook
± 11,007 SF on a 0.60 Acre Site

FOR LEASE

4202 16 Street SE, Calgary, AB



Jeff Keet Senior Vice President / Associate
403.519.9618 | jkeet@cdnglobal.com

Paul Cunningham Vice President | Associate
403.714.2803 | pcunningham@cdnglobal.com

CDN Global Advisors Ltd. 736 6th Ave SW, Suite 1010
Calgary, Alberta T2P 3T7 www.cdnglobal.com

CDNGLOBAL[®]
Commercial Real Estate Advisors

PROPERTY HIGHLIGHTS



- Centrally located freestanding building on a 0.60 Acre site.
- Property available for sale at \$2.69M.
- 4 private offices, showroom/open space, lunchroom, and 2 washrooms (1 shower) over two levels.
- Make-up Air system and Dust collection system.
- Heavy power.
- Drive-through capability. Sump.
- New LED lighting throughout warehouse.
- Close proximity to Ogden Road SE, Blackfoot Trail, Barlow Trail and Deerfoot Trail.
- Tenant management negotiable.

FOR LEASE | 4202 16 Street SE, Calgary, AB

PROPERTY OVERVIEW

Address:	4202 16 Street SE
District:	Alyth/Bonnybrook
Zoning:	Industrial Redevelopment
Year Built:	1991
Main Level:	± 10,007 SF
2nd Level Office:	± 1,000 SF
Total Rentable:	± 11,007 SF
Site Area:	0.60 Acres
Clear Height:	20' (TBV)
Loading:	1 Drive Through (16'w x 16'h) 1 Drive-In (10'w x 12'h) 1 Outside Dock (10'w x 12'h) 1 Drive-In (10'w x 10'h)
Power:	600 A @ 600 V (TBV)
Base Rent:	Starting at \$15.00 PSF
Property Tax (est. 2024):	\$35,200.00
Availability:	March 2025



INTERIOR FEATURES // 4202 16 St SE, Calgary, AB



Features:

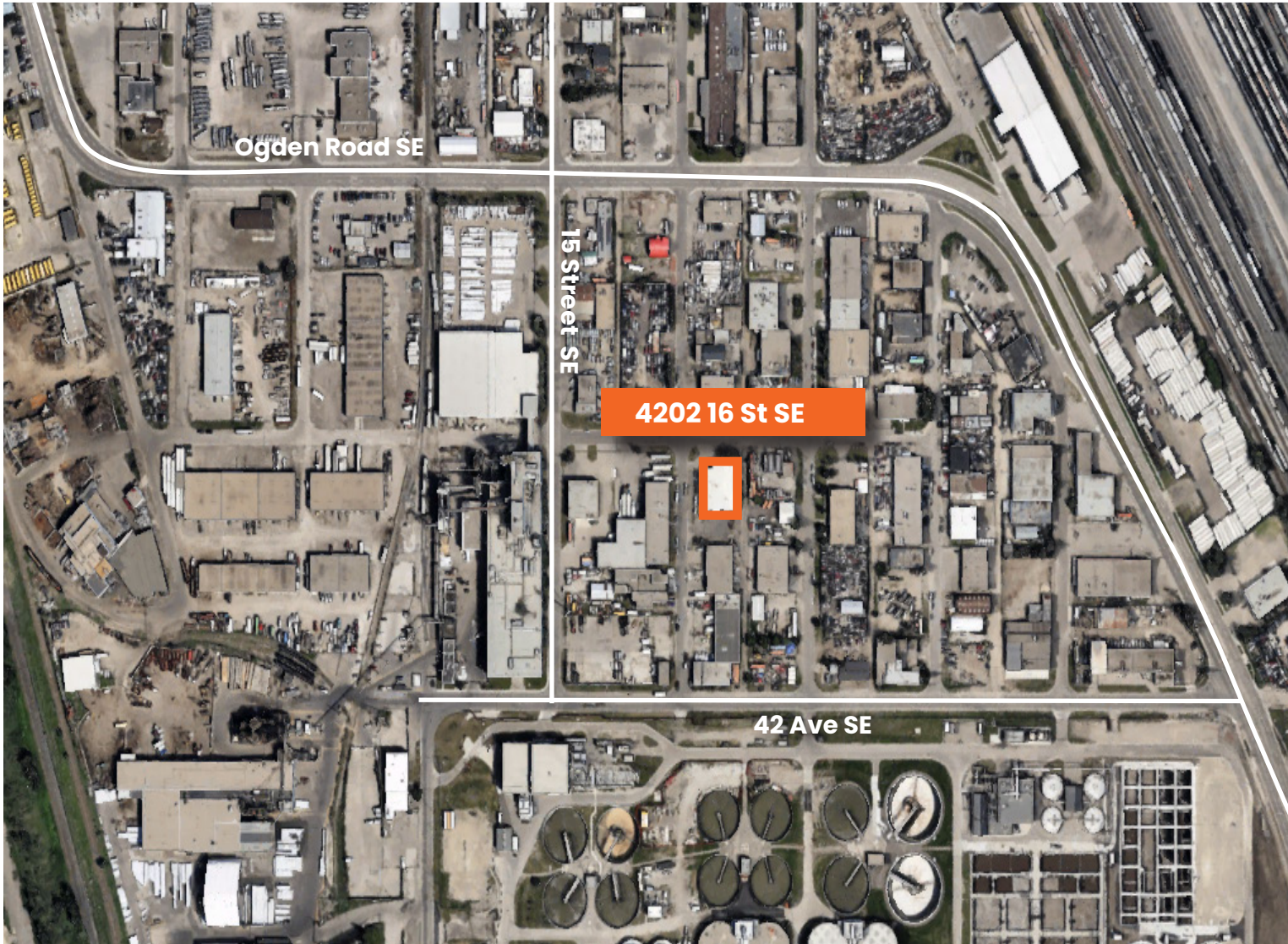
- Top Left Dust Collection System.
- Top Right, Kitchenette Area.



- Bottom Left Reception & Showroom.
- Bottom right Drive-Through Bay.

(Wash-Bay Potential)

LOCATION



Located in SE Calgary, Industrial Redevelopment, with convenient access to major thoroughfares for shipping and distribution.

Successful Calgary businesses within the immediate area: **Crossroads Market, Progressive Auto Repair Inc, Gateway Mechanical Services, Petro-Pass Truck Stop, and more.**

Nearby Amenities

Easy accessibility & close proximity to:



banks & financial services



restaurants & fast food



fuel / charging stations



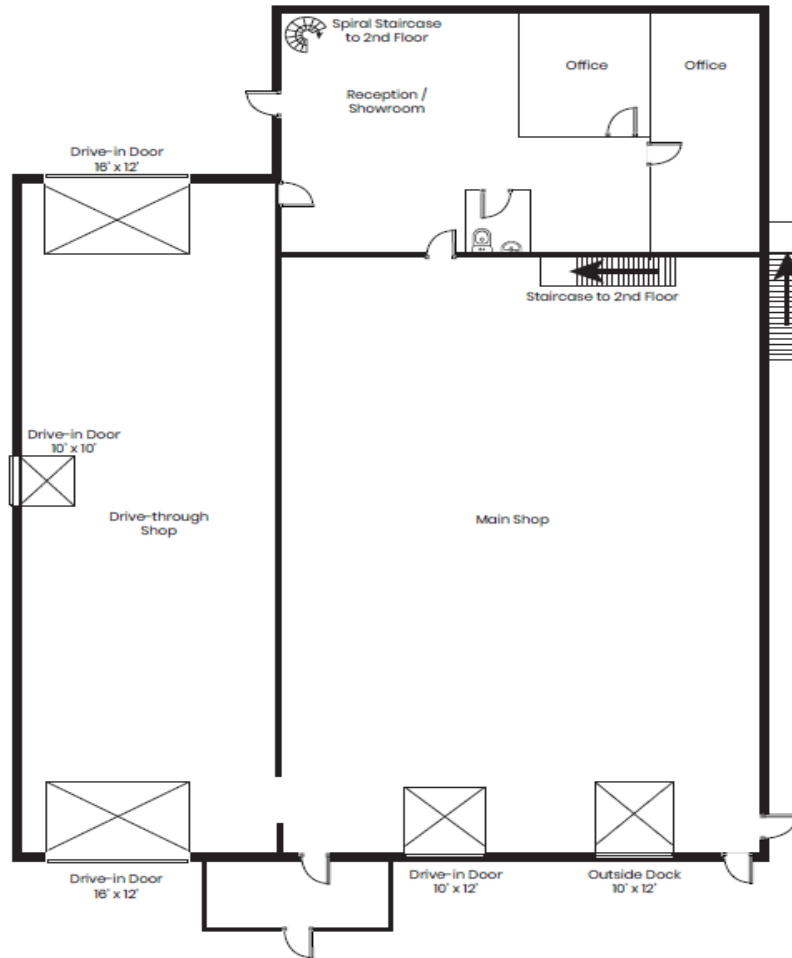
Prime Industrial Park location



Drive Times: Deerfoot Trail SE: 7 minutes Downtown Calgary: 12 minutes Calgary Airport: 20 minutes

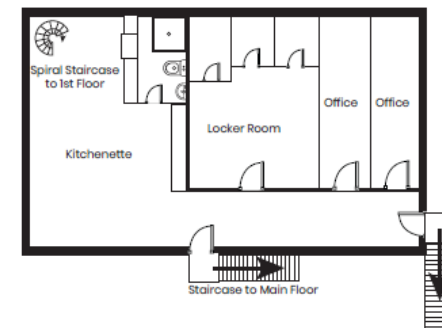
FLOOR PLANS

MAIN FLOOR PLAN



Warehouse (main floor) // ± 10,007 SF

SECOND FLOOR OFFICE



Office (second floor) // ± 1,000 SF



Jeff Keet Senior Vice President / Associate
403.519.9618 | jkeet@cdnglobal.com

Paul Cunningham Vice President | Associate
403.714.2803 | pcunningham@cdnglobal.com

This communication is intended for general information only and not to be relied upon in any way. Consequently, no responsibility or liability whatsoever can be accepted by CDNGLOBAL for any loss or damage resulting from any use of, reliance on or reference to the contents of this document, including hypertext links to external sources. In addition, as a general communication, this material does not necessarily represent the view of CDNGLOBAL in relation to particular properties or projects. This communication is not intended to cause or induce breach of any agency agreement. Reproduction or distribution of this communication in whole or in part is not allowed without prior written approval of CDNGLOBAL.

CDN Global Advisors Ltd. 736 6th Ave SW, Suite 1010
Calgary, Alberta T2P 3T7 www.cdnglobal.com

CDNGLOBAL[®]
Commercial Real Estate Advisors